

POWER RATING INDICATIONS ADAPTATION FOR DC MOTORS

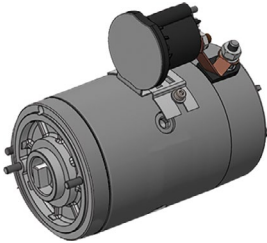
Please note that in order to adapt the power indications of DC electric motors to the standards used by the market and already adopted by OMFB on other motor families, the **power rating** identifications of the power units on which they are mounted will be indicated considering the service factors

12V: S2 = 2min S3 = 5%
24V: S2 = 2min S3 = 8%

replacing the **maximum deliverable power** indicated so far.

After this change, the power ratings on the power packs plate will be:

1600W for power packs with 12V motors
2200W for power packs with 24V motors.



As a result of that, the descriptions of power packs indicated on product labels

WAS



BECOMES



sales documents, and the power ratings shown on the technical datasheets will be adjusted.

Link:
[Power packs](#)

Link:
[KUBE](#)

It should be noted that the performance of the power packs will not change since the motors will not be modified. The change in the power ratings on the product plates will be introduced gradually from the next productions.

For any information you may need, please contact our export department.